

CC3H420

3 phase | 400 V | 20 A



Main circuit

Output type	SCR
Number of outputs	3
Rated voltage	400 V AC
Output voltage range	24 ... 480 VAC
Reverse voltage	1,200 Vrrm
Peak reverse voltage	1,300 Vrrm
Rated current AC-1	20 A
Rated current AC-3	10 A
Recommended minimum contact load	10 mA
Leakage current	1 mA
Rated limit load	610 A ² s

Control circuit

Nominal voltage	24 ... 230 V AC/DC
Operating voltage range	0.85 ... 1.1 U _N
Pick-up voltage	20.4 V
Release voltage	7.2 V
Pick-up time	20 ms
Release time	20 ms
Power consumption AC / DC	1.5 VA / 150 mW
Frequency range	50 / 60 Hz

Insulation

Rated insulation voltage	660 V
Rated impulse withstand voltage open contact	4 kV / 1 min
Pollution degree	3
Overvoltage category	III

General data

Storage temperature (no ice)	-20 ... 80 °C
Operation temperature	-5 ... 40 °C
Ambient temperature operation derated power	-5 ... 60 °C, 0.7 I _N
Conductor cross section control / main circuit	1.5 mm ² / 10 mm ²
Nominal screw torque control / main circuit	0.5 Nm / 1.2 Nm
Dimensions	fig. 2
Weight	1 050 g
Ingress Protection	IP 20
Housing material	PPE
Mounting	TH35 (EN 60715) or back panel mounting

Product references

Description	Type
Solid State Contactor, 3 phase	CC3H420
Other devices on request. Please contact support@comatreleco.com .	

Accessories

Thermal overload protection	P82-100C
-----------------------------	----------



fig. 1. Wiring diagram

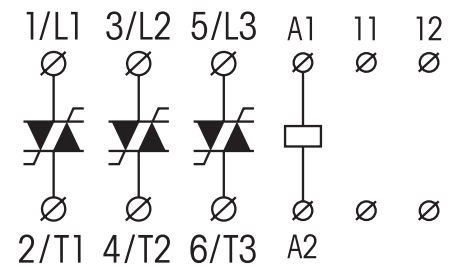
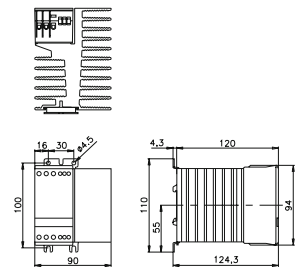


fig. 2. Dimensions (mm)



Technical approvals, conformities

Standards 50022; 60068; IEC/EN 60947

Approvals