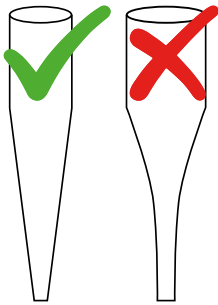




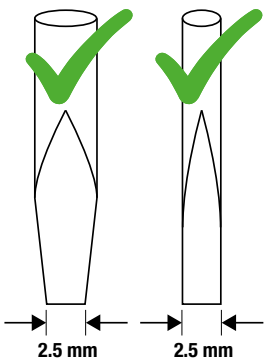
## Quick Guide Push-in relay socket family

### Screw driver side view

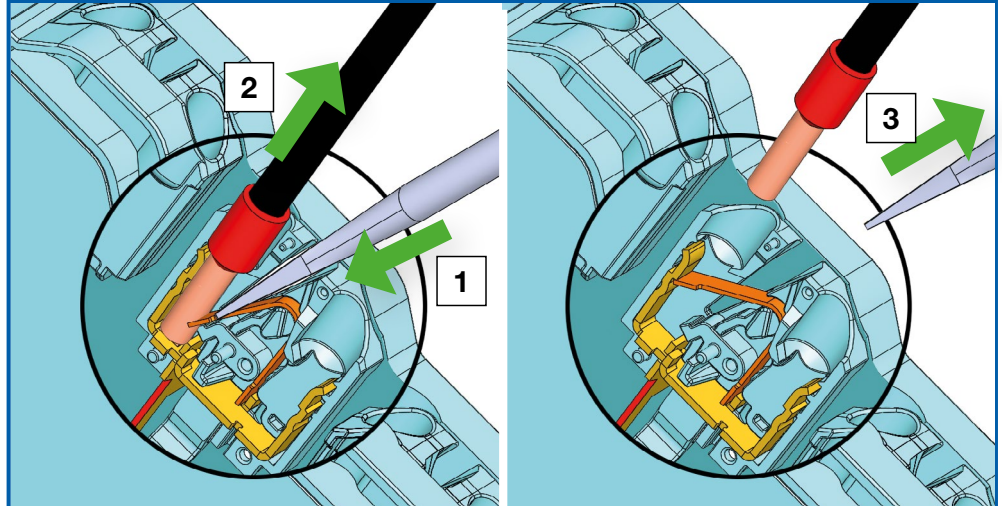


Shape A    Shape B  
ISO 2380-1

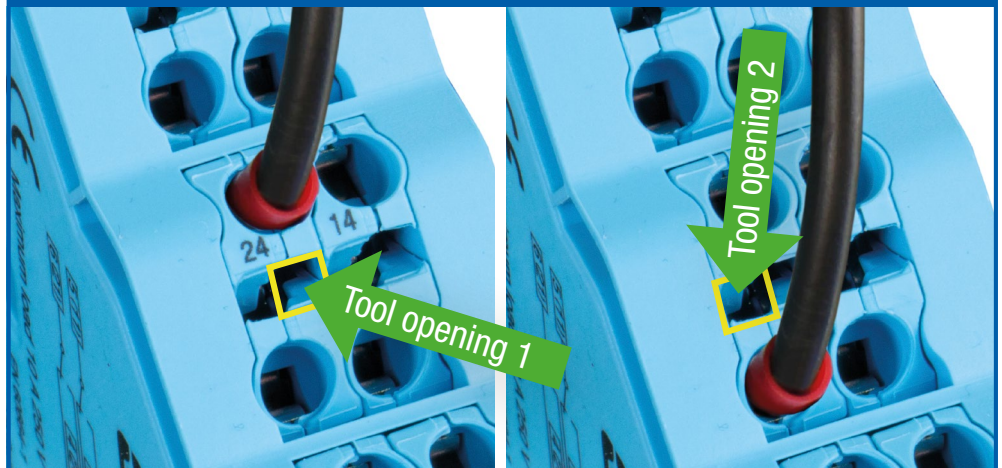
### Screw driver front view



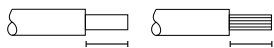
### Wiring removal with screwdriver or OT-PI kit (Tool opening 1)



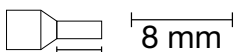
### Tool openings



### Conductor cross section and stripping length

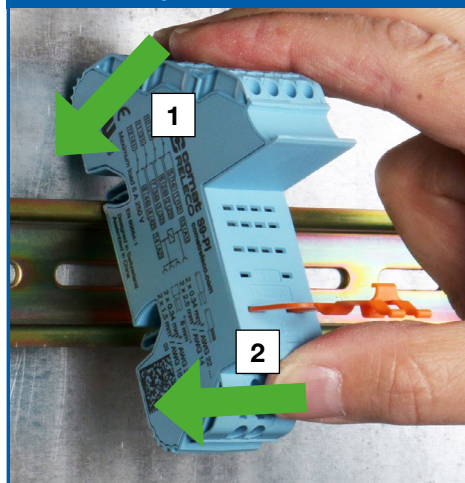


2 x 0.34 mm<sup>2</sup> / AWG 22 ...  
2 x 2.5 mm<sup>2</sup> / AWG 14

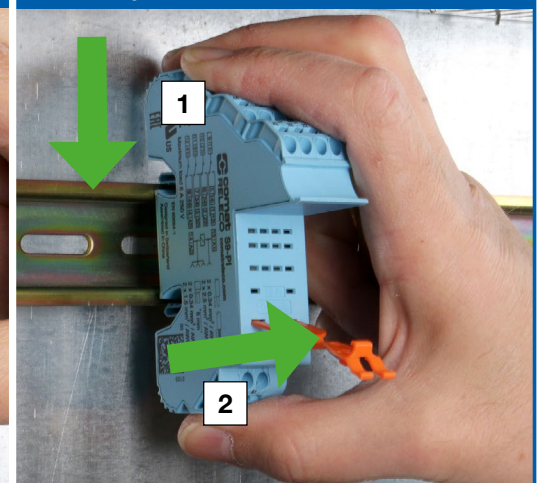


2 x 0.34 mm<sup>2</sup> / AWG 22 ...  
2 x 1.5 mm<sup>2</sup> / AWG 16

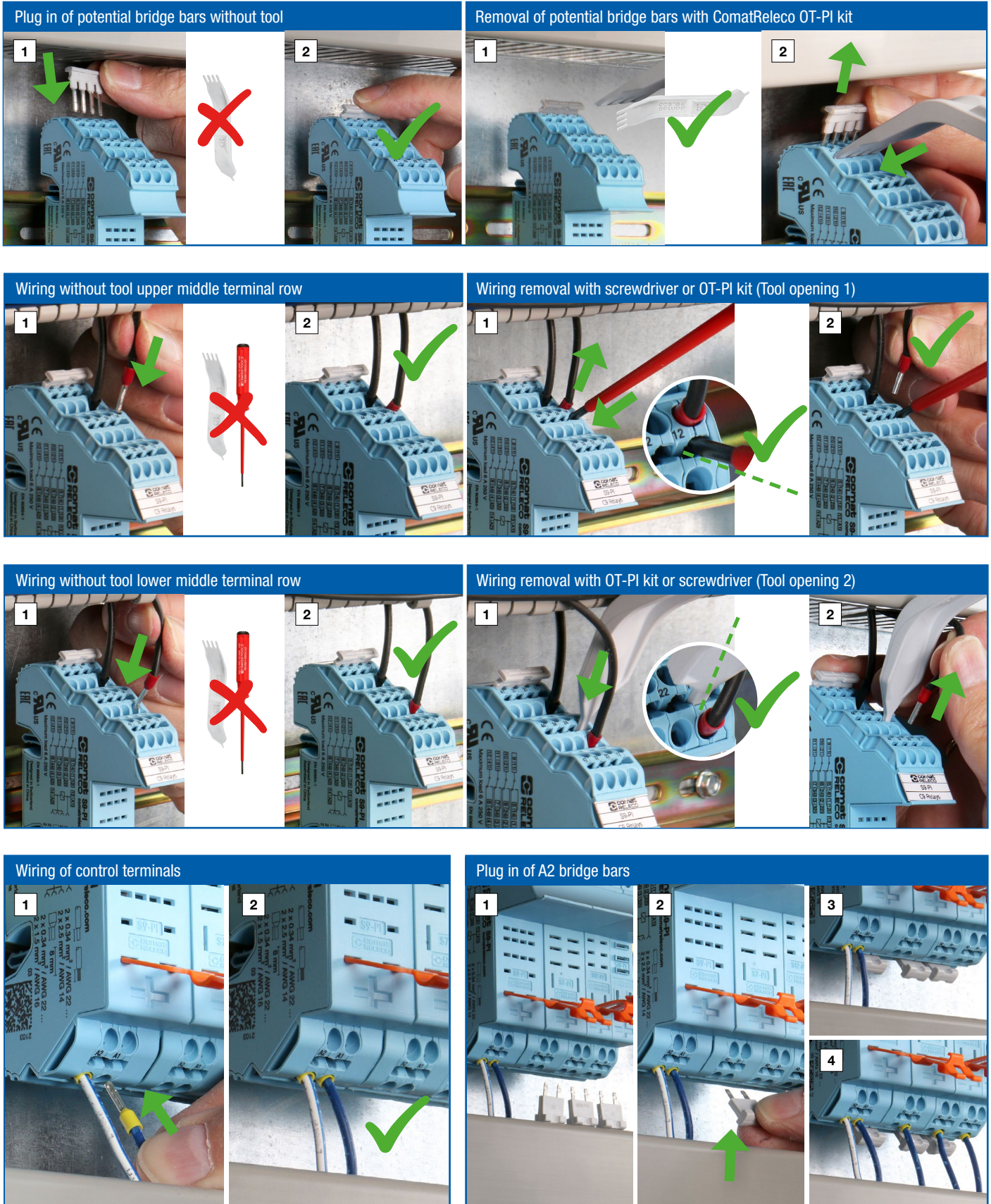
### 1-click mounting



### Dismounting

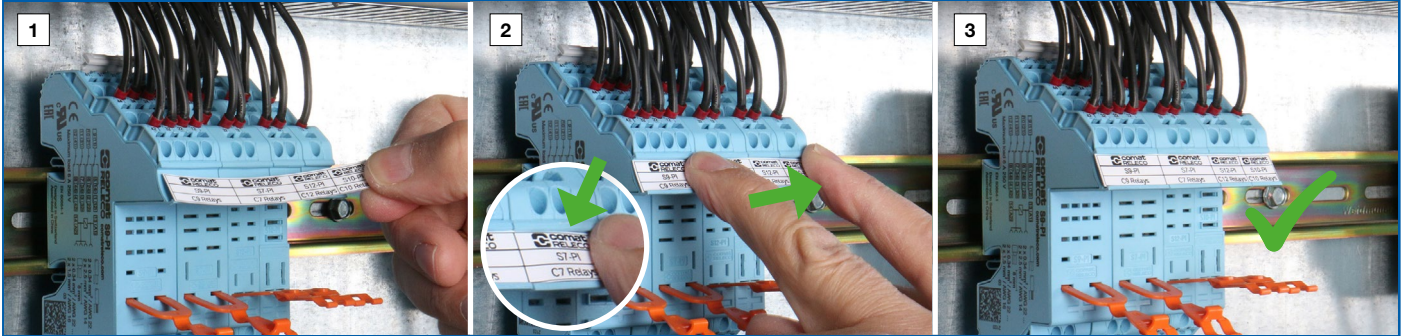


## Quick Guide Push-in relay socket family

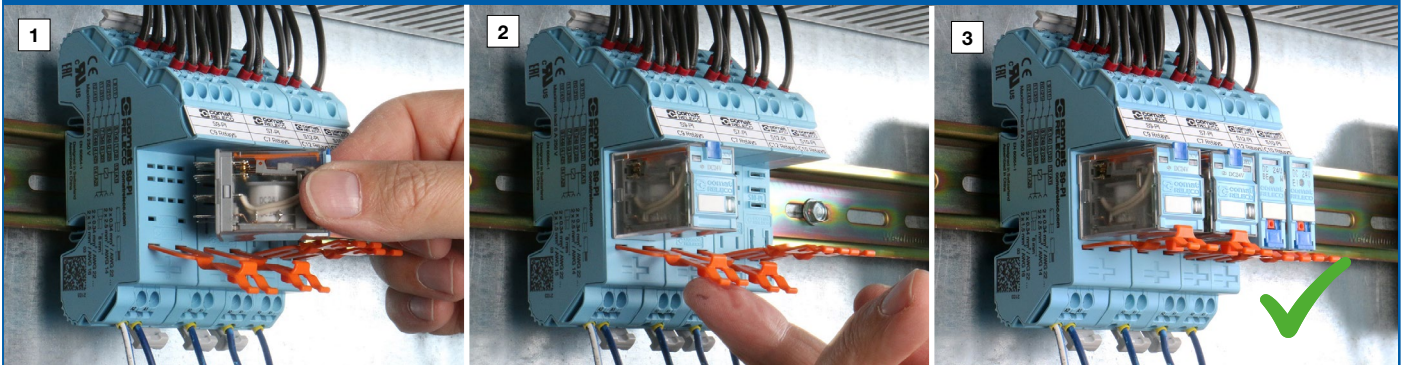


## Quick Guide Push-in relay socket family

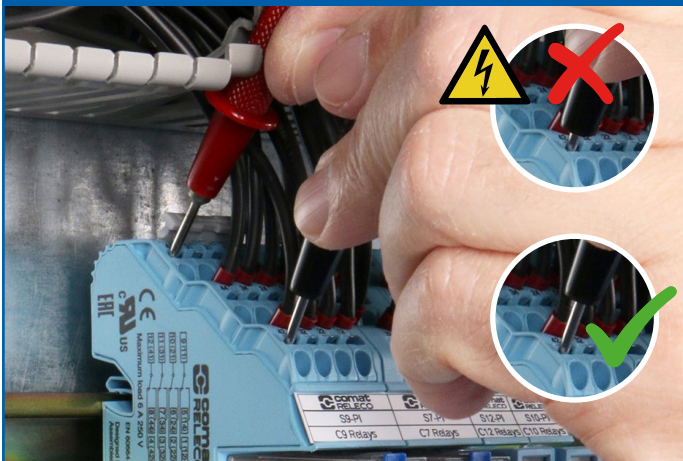
### Marking strip insertion



### Plug in relays



### Application of test probes in tool openings



### Application of test probes in contact terminals

