

S3-L (SK-3006)

Solder socket for 11-pin standard relay

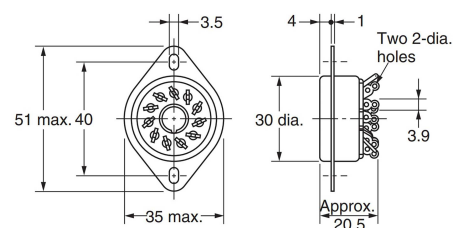


General data

Rated load	10 A / 250 V
Rated impulse withstand voltage open contact	2.0 kVAC
- Terminal / terminal	> 1GΩ
Insulation rating between all ports	Back mounting
Mounting	-40 ... 85 °C
Storage temperature (no ice)	-40 ... 85 °C
Operation temperature	15 g
Weight	Stainless steel / ABS
Housing material	see fig.1
Dimensions	



fig. 1. Dimensions (mm)



Technical approvals, conformities

Standards IEC 60664-1

Approvals  