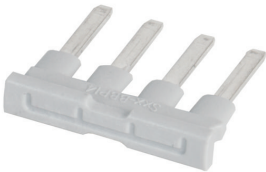


Sxx-BBPI4 (BAG 20 PCS)  
4-pole potential bridge bar for S9-PI(R) and S9-PI(R)



General data	
Rated load	6 A
Product references	
Description	Type
4-pole potential bridge bar for Push-in sockets	Sxx-BBPI4 (BAG 20 PCS)



Technical approvals, conformities

Approvals **CE EAC**