

S3-S

Socket for 11-pin standard Relays and Time Cubes

Rated Load **10 A / 250 V**

Specifications

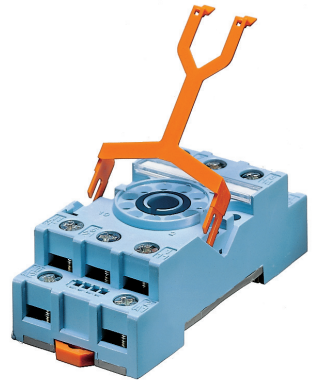
Rated impulse withstand voltage	2.5 kV rms / 1 min
- All terminals / DIN rail	2.5 kV rms / 1 min
- Terminal / Terminal	
Cross-section of connecting wire	
- Single-wire	4 mm ² / AWG 12 or 2 x 2.5 mm ² / AWG 14
- Multi-wire	0.34 mm ² / AWG 22 - 2.5 mm ² / AWG 14
Nominal screw torque	1.2 Nm
Screw Dimensions (mm)	M3.5 Pozi slot
Mounting	TS-35 or Back Panel Mounting
Ambient temperature operation/storage	-40...60 °C / -40 ... 80 °C (no ice)
Weight	69g

Included Accessories

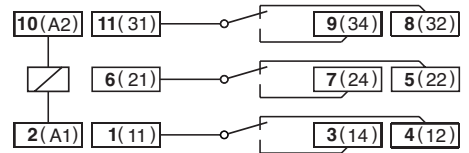
Retaining Clip, plastic S30-CM for C3 / C3x Relays

Optional Accessories

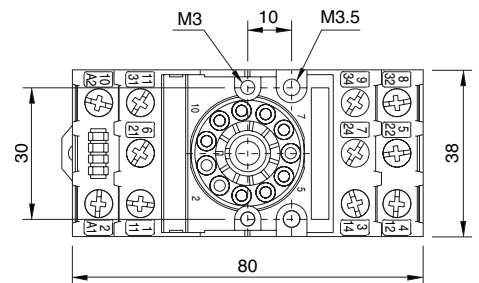
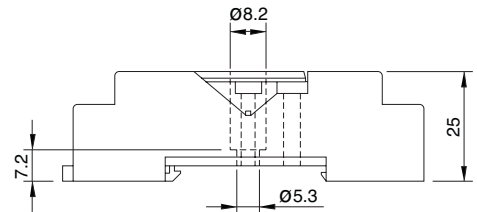
Retaining clip, steel HF-32 (BAG 10 PCS) for C3 / C3x Relays
 Coding Ring HF-33 (BAG 10 PCS) for Time Cube CTx
S3-BC (BAG 5 PCS) for C3 / C3x Relays



Connection diagram



Dimensions (mm)



4.2 11-Pin Sockets

Technical approvals, conformities



Socket Selection for industrial Relays																										
Socket Type	Description	C2	C3	C4	C5	C7	C9	C10	C12	C16PTL / C18PTL	C18-A15PT	C21	C22	C31	C32	R7	R-Module	C52 / C53 / C64	C55 / C56	C83 / C85	CT2	CT3	CT32 / CT33 / CT36	CT515 / CT524	KDM	
EC-11	Socket for industrial Relay		●											●	●											
S2-B	Socket for industrial Relay	●																				●				
S2-S *	Socket for industrial Relay	●										●	●									●				
S2-L *	Socket for industrial Relay	●																				●				
S2-P *	Socket for industrial Relay	●																				●				
S2-P0 *	Socket for industrial Relay	●																				●				
S3-B	Socket for industrial Relay		●											●	●			●	●				●			
S3-MP	Socket for industrial Relay		●											●	●			●	●				●			
S3-S	Socket for industrial Relay		●											●	●			●	●				●			
S3-P *	Socket for industrial Relay																	●	●				●			
S3-P0 *	Socket for industrial Relay																	●	●				●			
S3-M0	Socket for industrial Relay		●											●	●		●							●	●	
S3-M1	Socket for industrial Relay		●											●	●			●	●				●			
S3-M	Socket for industrial Relay		●											●	●			●	●				●			
S4-J	Socket for industrial Relay			●																						
S4-L	Socket for industrial Relay			●																						
S4-P	Socket for industrial Relay			●																						
S5-M	Socket for industrial Relay				●													●						●	●	
S5-L	Socket for industrial Relay				●																					
S5-P	Socket for industrial Relay																									
S7-C	Socket for industrial Relay					●											●	●			●					●
S7-I0	Socket for industrial Relay					●											●	●								
S7-16	Socket for industrial Relay					●											●	●								
S7-P *	Socket for industrial Relay					●											●									
S7-L *	Socket for industrial Relay					●											●									
S9-M	Socket for industrial Relay						●																			
S9-P	Socket for industrial Relay						●																			
S9-L *	Socket for industrial Relay						●																			
S9-P0	Socket for industrial Relay																									
S10	Socket for industrial Relay							●																		
S10-P	Socket for industrial Relay							●																		
S12	Socket for industrial Relay								●																	
S12-P	Socket for industrial Relay								●																	
S16-M	Socket for industrial Relay									●								●								
S18-M	Socket for industrial Relay										●							●								

* Discontinued, limited units may be still available from stock.

Socket Accessoires																	
Type	Description	S3-M	S3-M0	S3-M1	S2-B	S3-B	S5-M	S7-C	S10	S7-I0	S12	S9-M	S4-J	S7-L	S7-P	S9-L	S9-P
CA-11	Code Ring (BAG 5 PCS)					●											
C-A2	Neutral-Connector (BAG 5 PCS or 50 PCS)	●	●	●			●										
SC-3	A1-Connector (BAG 10 PCS)		●	●			●										
LH-1	Label carrier transparent (BAG 5 PCS)	●	●	●													
SL-36	Label holder transparent (BAG 5 PCS)				●	●											
SP-36	Labeling strips (BAG 5 PCS)				●	●											
L-16	Labeling strips (BAG 5 PCS)	●	●	●													
SD-1T	Lock lid transparent (BAG 5 PCS)	●	●	●			●										
SD-1W	Lock lid white (BAG 5 PCS)	●	●	●			●										
B20-G	Bridge Bar grey (BAG 5 PCS)										●						
B20-R	Bridge Bar red (BAG 5 PCS)										●						
B20-A	Bridge Bar blue (BAG 5 PCS)										●						
PS-W	Labeling strips							●									
S7-BB	Bridge bar (BAG 5 PCS (5 x 4))							●		●							
S9-CH	Labeling srib white (BAG 10 PCS)									●		●					
S10-BB	Bridge bar (BAG 20 PCS (5 x 4))								●								
S10-RH	Labeling srib white (BAG 10 PCS)								●		●						
S10-RT	Transparent Cover (BAG 20 PCS)								●								
SA-0	Wall Adapter							●	●		●						
SS-T	Transparent Cover							●									
SS-W	White Cover							●									
V10-G	Bridge Bar grey (BAG 5 PCS)										●						
V10-R	Bridge Bar red (BAG 5 PCS)										●						
V10-A	Bridge Bar blue (BAG 5 PCS)										●						
V40-G	Bridge Bar grey (BAG 5 PCS)										●						
V40-R	Bridge Bar red (BAG 5 PCS)										●						
V40-A	Bridge Bar blue (BAG 5 PCS)										●						

