

EC-11

11-pin C3 Relay socket | Time Cubes compatible

General data

Rated load	10 A / 400 V
Dielectric strength	
– All terminals / DIN rail	2.5 kV rms / 1 min
– Terminal / terminal	2.5 kV rms / 1 min
Cross-section of connecting wire	
– Single-wire	4 mm ² / AWG 12 or 2 x 2.5mm ² / AWG 14
– Multi wire	0.34 mm ² / AWG 22 ... 2.5 mm ² / AWG 14
Nominal screw torque	0.7 Nm
Screw Dimension	M3.5 Pozi slot
Mounting	TH35 (EN 60715) or back panel mounting
Ambient temperature storage (no ice)	-40 ... 80 °C
Ambient temperature operation	-25 ... 60 °C
Weight	56 g
Housing material	PA / PC



fig. 1. Wiring diagram

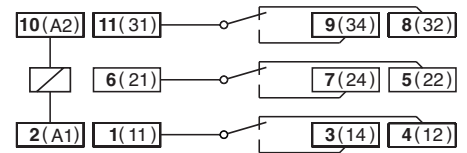
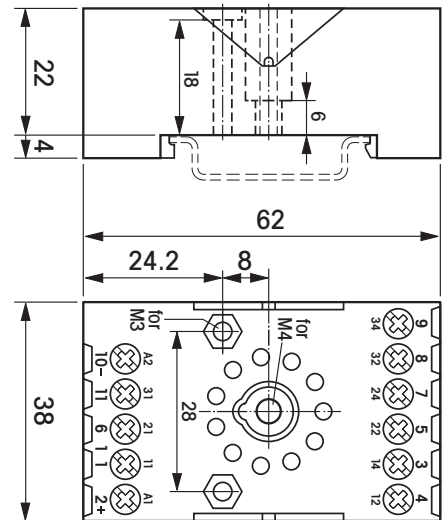


fig. 2. Dimension (mm)



Technical approvals, conformities

Standards EN 60664-1

Approvals

Socket Accessoires																			
Type	Description	S7-PI	S7-PIR	S9-M	S9-P	S9-PI	S9-PIR	S10	S10-GR	S10-P	S10-PI	S10-PIR	S12	S12-P	S12-PI	S12-PIR	S16-M	S18-M	S18-M
B20-A (BAG 5 PCS)	A2-Connector blue												●						
B20-G (BAG 5 PCS)	A2-Connector grey												●						
B20-R (BAG 5 PCS)	A2-Connector red												●						
C-A2 (BAG 50PCS)	A2-Connector	●	●			●	●				●	●			●	●			
C-A2 (BAG 5PCS)	A2-Connector																		
CP-07B (BAG 50PCS)	Retaining clip, plastic																		
CP-16 (BAG 10 PCS)	Retaining clip, plastic																●	●	
CP-24B (BAG 10 PCS)	Retaining clip, plastic									●				●					
HF-32 (BAG 10 PCS)	Retaining clip, steel																		
HF-33 (BAG 10 PCS)	Retaining clip, steel																		
RC0047-100/AC250V (BAG 5PCS)	RC-Suppressor module																		
RC1/UC110-240V	RC-Suppressor module																		
RD1/DC12-220V	Freewheeling diode module																		
RD2/DC12-220V	Freewheeling diode module																		
RDL2/DC24-60V	Freewheeling diode module with LED																		
RDL2/DC6-24V	Freewheeling diode module with LED																		
RDL2/UC110-240V	Freewheeling diode module with LED																		
S10-BB (BAG 20 PCS)	A2-Connector							●	●										
S10-C/CP-17B (BAG 10 PCS)	Retaining clip, plastic							●	●										
S10-CPI (BAG 10 PCS)	Retaining clip, plastic										●	●			●	●			
S30-CM (BAG 10 PCS)	Retaining clip, plastic																		
S3-BC (BAG 5 PCS)	Coding ring 5 PCS																		
S3-C (BAG 10 PCS)	Retaining clip, steel																		
S4-CL (BAG 10 PCS)	Retaining clip, steel																		
S5-C (BAG 10 PCS)	Retaining clip, steel																		
S5M-CP	Retaining clip, plastic																		
S7-BB (BAG 20 PCS)	A2-Connector																		
S7-CPI (BAG 10 PCS)	Retaining clip, plastic	●	●			●	●												
S9-C/CP-01B (BAG 10 PCS)	Retaining clip, plastic			●															
S9-G (BAG 10 PCS)	Panel adapter			●															
S9M-BX (BAG 5 PCS)	Bridge bar			●															
S9M-V1 (BAG 5 PCS)	Bridge bar			●															
S9M-V4 (BAG 5 PCS)	Bridge bar			●															
SC-3 (BAG 10 PCS)	A1-, B1-connector																		
Sxx-BBPI (BAG 20 PCS)	A2-Connector	●	●			●	●				●	●			●	●			
TM-1	Push-in tool	●	●			●	●				●	●			●	●			
V10-A (BAG 5 PCS)	Bridge bar twofold blue												●						
V10-G (BAG 5 PCS)	Bridge bar twofold grey												●						
V10-R (BAG 5 PCS)	Bridge bar twofold red												●						
V40-A (BAG 5 PCS)	Bridge bar fourfold blue												●						
V40-G (BAG 5 PCS)	Bridge bar fourfold grey												●						
V40-R (BAG 5 PCS)	Bridge bar fourfold red												●						

Retaining clip selection for socket and relay												
Socket type	C2	C2 + CT2 Timecube	C3 / R3	C3 + CT3 Timecube	C4 / R4	C5	C7	C9	C10 / CSS	C12	C16 PTL / C18 PTL	C18-A15PT
EC-11			HF-32									
S2-B	S30-CM HF-32	HF-33										
S2-P0	HF-32											
S3-B			S30-CM HF-32	HF-33								
S3-S			S30-CM HF-32	HF-33								
S3-M(x)			HF-32	HF-33								
S4-J / -GR					S3-C CP-15B S3-C							
S4-P					S4-CL							
S5-SSY						S5-C						
S5-M						S5M-CP HF-32						
S7-C							S7-CPO CP-07B					
S7-I0 / -GR							S9-C CP-01B					
S7-P							S7-CPO CP-07B					
S7-PI							S7-CPI					
S7-PIR							S7-CPI					
S9-M								S9-C CP-01B				
S9-P								S7-CPO CP-07B				
S9-PI							S7-CPI	S7-CPI				
S9-PIR							S7-CPI	S7-CPI				
S10 / -GR									S10-C CP-17B			
S10-P									CP-24B			
S10-PI									S10-CPI	S10-CPI		
S10-PIR									S10-CPI	S10-CPI		
S12 / -GR										S10-C CP-17B		
S12-P										CP-24B		
S12-PI									S10-CPI	S10-CPI		
S12-PIR									S10-CPI	S10-CPI		
S16-M											CP-16	
S18-M												CP-16

Retaining clip selection for socket and relay													
Socket type	C21	C21 + CT2 Timecube	C22	C22 + CT2 Timecube	C31	C31 + CT3 Timecube	C32	C32 + CT3 Zeitwürfel	R7	R9	R10	R12	CSS
EC-11					HF-32	HF-33	HF-32	HF-33					
S2-B	HF-32	HF-33	HF-32	HF-33									
S2-P0													
S3-B					S30-CM HF-32	HF-33	S30-CM HF-32	HF-33					
S3-S					S30-CM HF32	HF-33	S30-CM HF32	HF-33					
S3-M(x)					HF-32	HF-33	HF-32	HF-33					
S4-J / -GR													
S4-P													
S5-SSY													
S5-M													
S7-C													
S7-IO / -GR									S7-CP0 CP-07B				
S7-P													
S7-PI													
S7-PIR									S7-CPI				
S9-M													
S9-P													
S9-PI													
S9-PIR										S7-CPI			
S10 / -GR											S10-C CP-17B		
S10-P													
S10-PI													S10-CPI
S10-PIR											S10-CPI		
S12 / -GR												S10-C CP-17B	
S12-P													
S12-PI													
S12-PIR												S10-CPI	
S16-M													
S18-M													

Socket selection for industrial & railway Relays

Socket Selection for industrial & railway Relays																												
Socket Type	C2	C3 / R3	C4 / R4	C5	C7	C9	C10	C12	C16PTL / C18PTL	C18-A15PT	C21	C22	C31	C32	R7	R9	R10	R12	R-Module	CSS	CS2 / CS3 / C64	C55 / C56	C83 / C85	CT2	CT3	CT32 / CT33 / CT36	CT515 / CT524	KDM
EC-11		●											●	●														
S2-B	●																								●			
S2-P0 *	●																								●			
S3-B		●											●	●								●	●			●		
S3-C		●											●	●								●	●			●		
S3-S		●											●	●								●	●			●		
S3-P0 *																						●	●			●		
S3-M0 / S3-MOR		●											●	●						●						●		●
S3-M1 / S3-M1R		●											●	●								●	●			●		
S3-M / S3-MR		●											●	●								●	●			●		
S4-J / -GR			●																									
S4-L *			●																									
S4-P			●																									
S5-M				●																●						●		●
S5-L *				●																								
S5-P				●																								
S5-SSY				●																								
S7-C					●										●					●				●				●
S7-IO / -GR					●										●					●								
S7-16 *					●										●					●								
S7-P *					●										●													
S7-PI					●																							
S7-PIR															●													
S9-M						●																						
S9-P						●																						
S9-PI						●																						
S9-PIR																●												
S10 / -GR							●																					
S10-P							●																					
S10-PI							●																					
S10-PIR																●					●							
S12								●																				
S12-P								●																				
S12-PI								●																				
S12-PIR																●												
S16-M									●												●							
S18-M										●											●							

* Discontinued, limited units may be still available from stock.