

CCM33H530USi

3 phase | 480 V | 30 A | Starting Torque Limiter



Main circuit

Number of outputs	3
Controlled phases	3
Output type	⚡ Thyristor
Bypass	Externally
Rated voltage	400 V
Output voltage range	200 ... 480 V AC
Reverse voltage	1,200 V _{rrm}
Peak reverse voltage	1,300 V _{rrm}
Rated current AC-53b	30 A
Minimum load	3 A
Leakage current	5 mA
Inrush current	180 A, 450 ms A
Rated limit load	6,300 A ² s
Switching frequency (cycles / h)	120

Control circuit

Operating voltage range	24 - 230 V AC/DC
Release voltage	5 V AC/DC
Ramp-up time	0.5 ... 30 s
Ramp-down time	0.5 ... 60 s
Torque adjustment	0 ... 85 %
Rated frequency	50 / 60 Hz

Insulation

Rated insulation voltage	660 V
Rated impulse withstand voltage open contact	4 kV / 1 min
Pollution degree	3
Overvoltage category	III

General data

Ambient temperature storage (no ice)	-20 ... 80 °C
Ambient temperature operation	-5 ... 40 °C
Ambient temperature operation derated power	-5 ... 60 °C
Conductor cross section control / main circuit	2.5 mm ² / 6 mm ²
Nominal screw torque control / main circuit	0.5 Nm / 1.2 Nm
Dimension	fig. 2
Weight	1050 g
Protection degree	IP 20
Housing material	PPE
Mounting	TS 35 or Back Panel Mounting

Product references

Description	Type
Starting Torque Limiter, 3 phase	CCM33H530USi

Other devices on request. Please contact support@comatreleco.com.

Accessories

Thermal overload protection	P82-100C
-----------------------------	----------



fig. 1. Wiring diagram

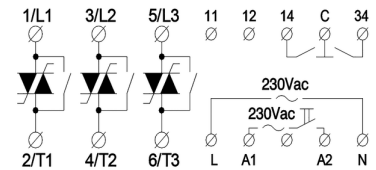
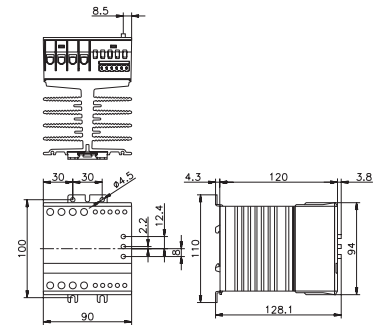


fig. 2. Dimension (mm)



Technical approvals, conformities

Standards IEC/EN 60947-4-2

Approvals