

AF-20MR-D2-CAP**12 digital inputs / analog DC / 8 relay outputs | NO****Power supply**

Nominal voltage	12 ... 24 V DC
Operating voltage range	10 ... 28 V DC
Power consumption DC	< 5 W

Inputs

Number of digital or analog inputs	12
Nominal voltage digital inputs	10 ... 24 V DC
Delay time	50 ms

Outputs

Digital output	25 000 switch cycles
Output type	0.5 Hz
Number of relay outputs	8
Contact type	NO
Rated voltage	250 V AC
Rated current	10 A

Memory

Storage capacity	Program 64 k / 127 function block
Programming language	Function block diagram (FDB)
Resistor load / Lamp load	10 Hz
Induced load	2 Hz

Communication

Interface	support 2 channel with RS485 and 1 channel with program interfaces
Baud rate	9600 bps / 19200 bps
Protocol	Self-defined protocol / MODBUS RTU protocol (only read)

General data

Ambient temperature storage (no ice)	-40 ... 70 °C
Ambient temperature operation	-20 ... 70 °C
Dimension	fig. 2.
Weight	282 g
Mounting	M3 or DIN rail

Product reference

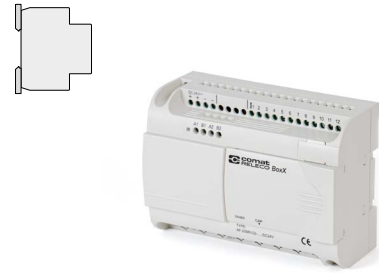
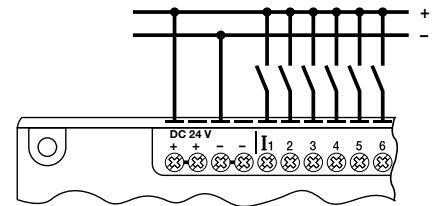
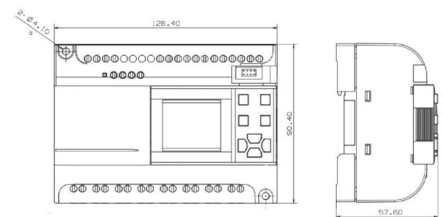
Description	Type
12 digital inputs / 8 outputs	AF-20MR-D2-CAP/DC24V

Other devices on request. Please contact support@comatreleco.com.

The Quick II software is available free of charge on comatreleco.com at downloads.

Accessories

Display for programming	AF-HMI
Front cover	AF-CAP
Programming cable	AF-DUSB2

**fig. 1. Wiring diagram****fig. 2. Dimension (mm)****Technical approvals, conformities**

Standards IEC/EN 61000-3-2; IEC/EN 61000-3-3;
IEC/EN 55032; IEC/EN 55035

Approvals 