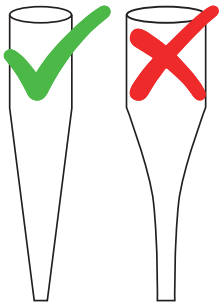




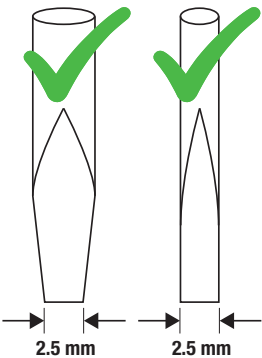
Kurzanleitung Push-in Relaissockelfamilie

Seitenansicht Schraubendreher

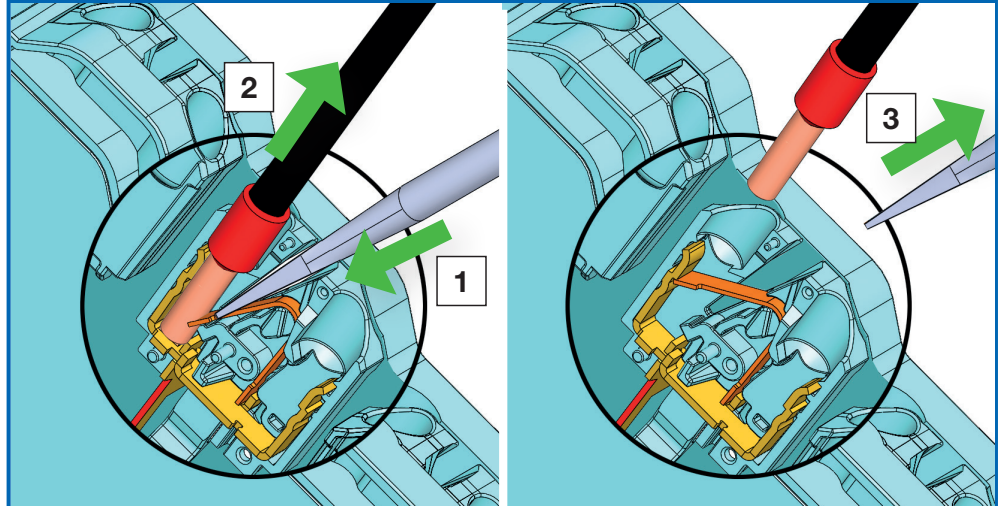


Form A Form B
ISO 2380-1

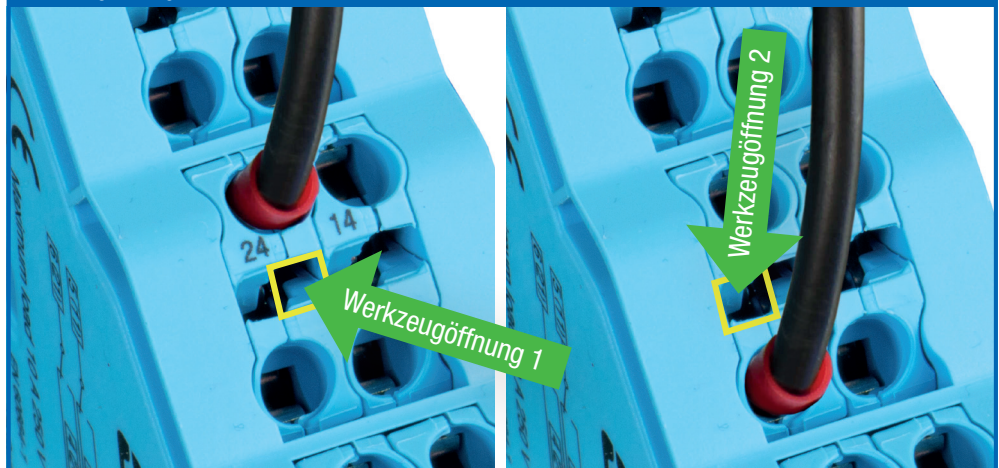
Frontansicht Schraubendreher



Verdrahtung lösen mit Schraubendreher oder OT-PI kit (Werkzeugöffnung 1)



Werkzeugöffnungen



Kabelquerschnitte und Abisolierlänge

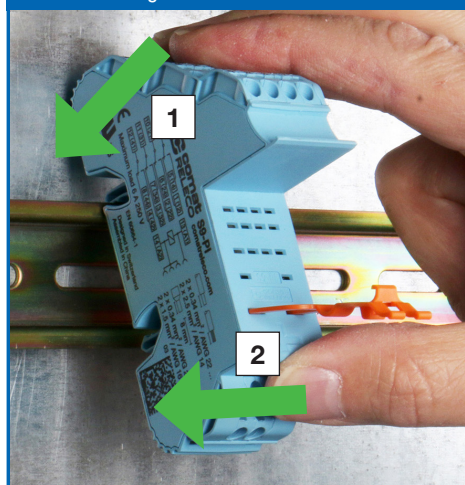


2 x 0.34 mm² / AWG 22 ...
2 x 2.5 mm² / AWG 14

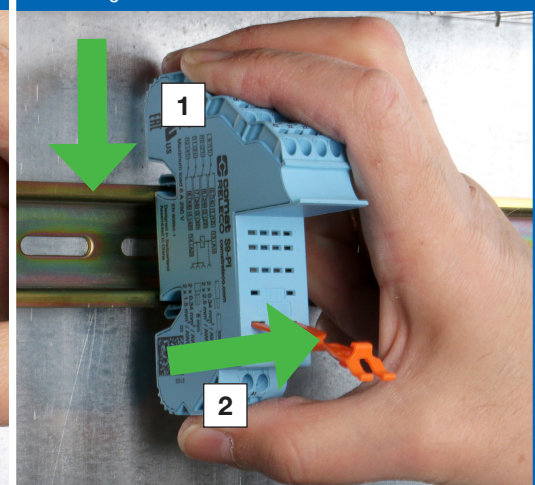


2 x 0.34 mm² / AWG 22 ...
2 x 1.5 mm² / AWG 16

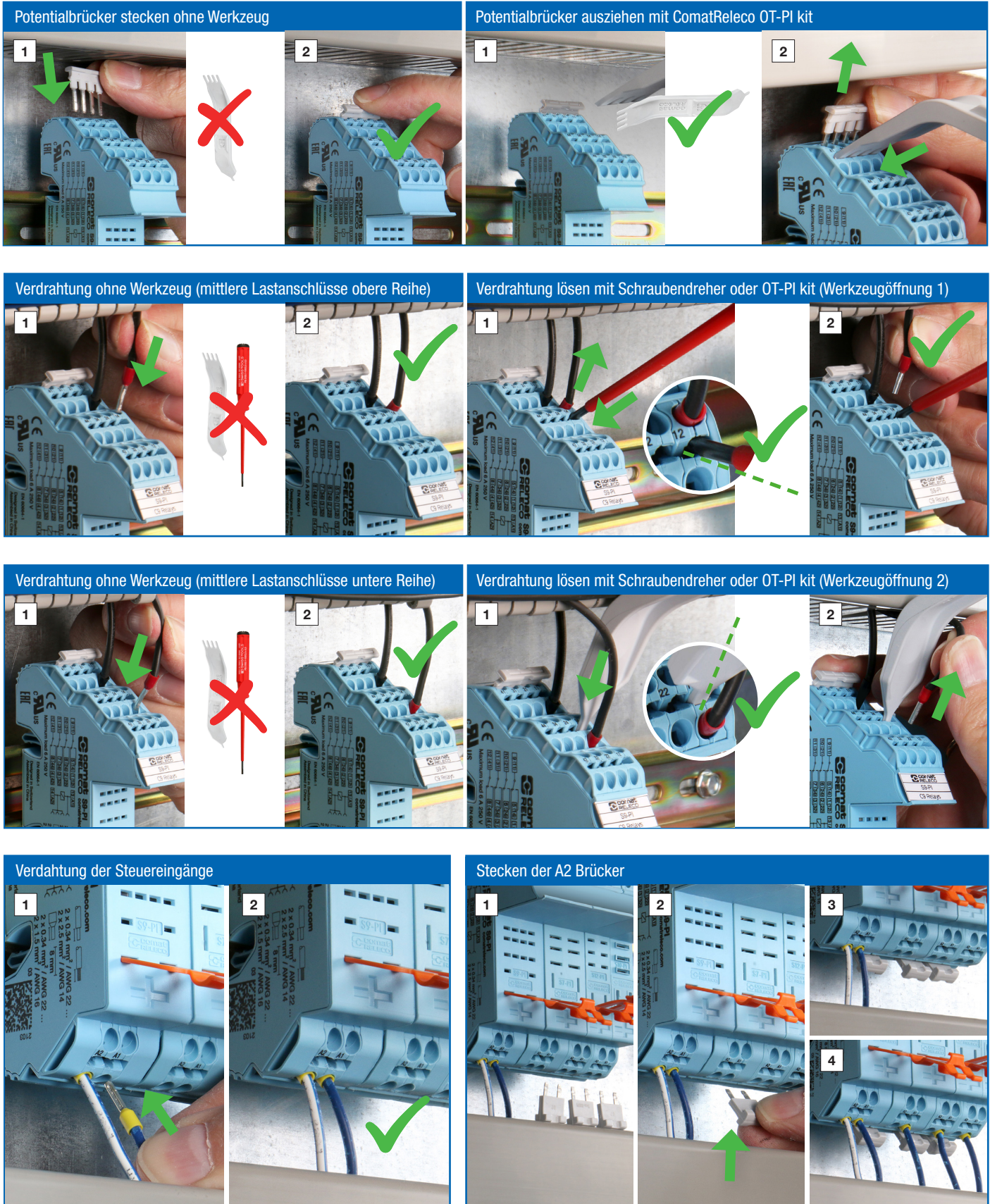
1-Klick-Montage



Demontage

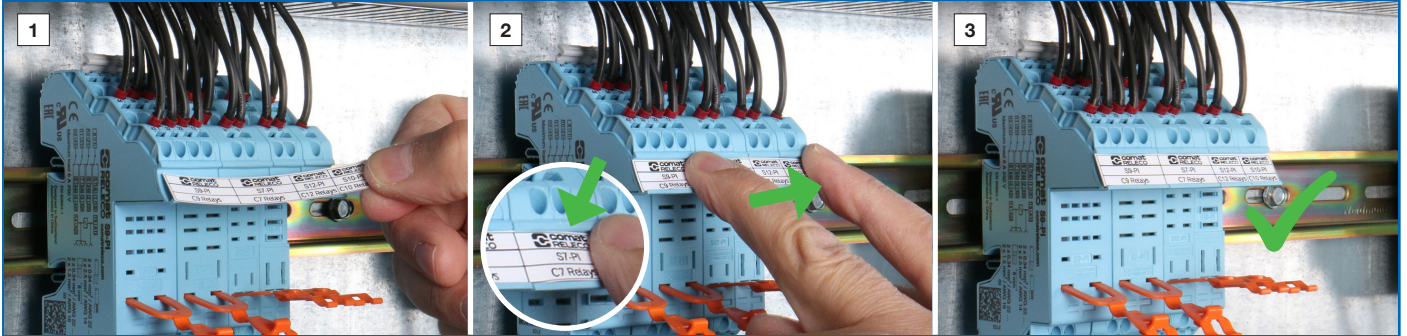


Kurzanleitung Push-in Relaissockelfamilie

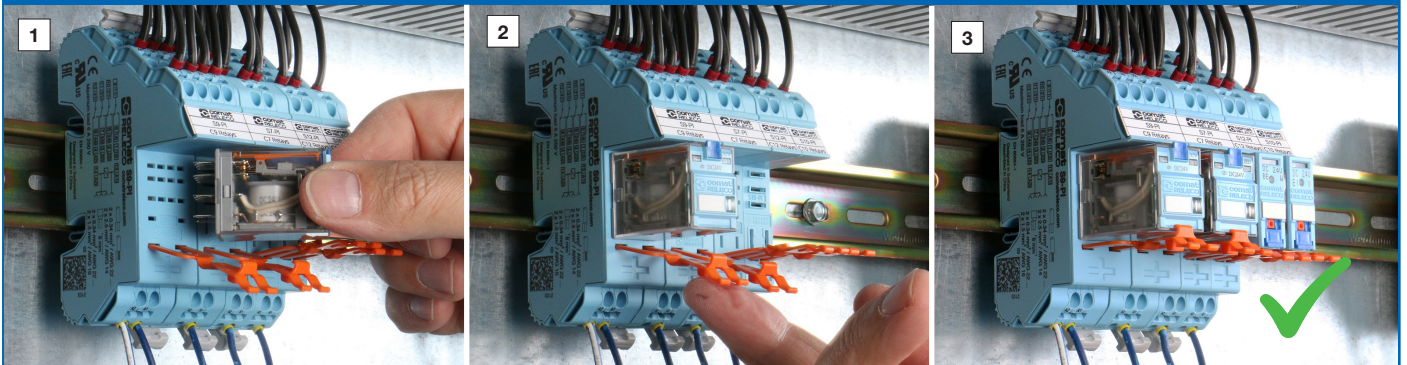


Kurzanleitung Push-in Relaissockelfamilie

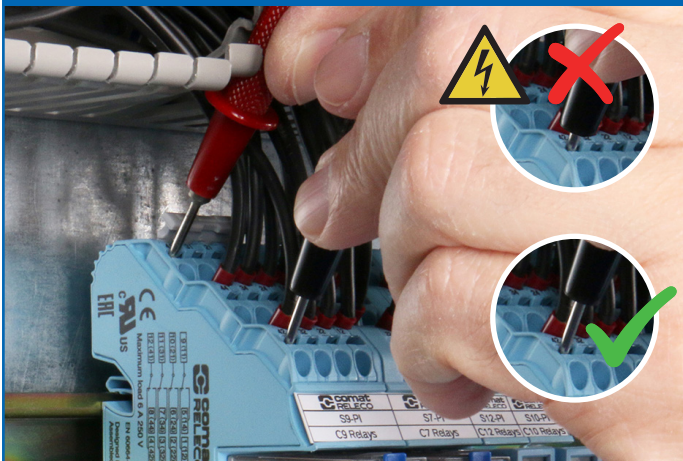
Einlegen und Einrasten des Beschriftungstreifens



Relais einstecken, Halteclips einrasten



Prüfspitzen in Werkzeugöffnungen einführen



Prüfspitzen in Lastanschlüssen einführen

