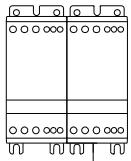
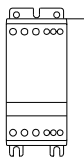


## Montering - Mounting - Montage



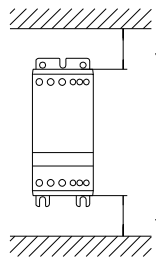
80 mm min.



DK: Hvis enheden er monteret vandret, skal driftsstrømmen reduceres med 50%

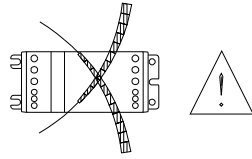
EN: If the unit is mounted horizontally the current must be derated by 50%

DE: Falls Einheit horizontal montiert wird, muss der Strom um 50% reduziert werden

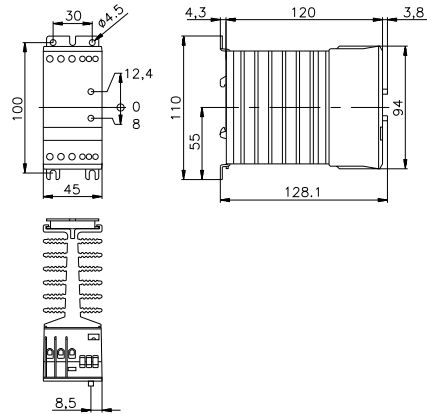


30 mm min.

30 mm min.



## Dimensioner - Dimensions - Dimensionen



DK: Køleplade skal holdes ren. Luftstrømmen må ikke blokeres

EN: Keep heatsink clean. Airflow must not be blocked

DE: Kühlflächen freihalten. Luftstrom muss ungehindert fließen



## Forbindelse - Wiring - Verdrahtung

75°C Cu Wire/Kabel	mm <sup>2</sup>	mm <sup>2</sup>
*	1 x 0.75 - 4	1 x 0.5 - 1.5
	2 x 1.0	2 x 0.5 - 0.75
*	1 x 0.75 - 6	1 x 0.5 - 1.5
	2 x 0.75 - 4.5	2 x 0.5 - 1.5
*	1 x 0.75 - 6	1 x 0.5 - 1.5
	2 x 0.75 - 1.5	2 x 0.5 - 1.5
	Pozidrive 1 0.5 Nm max.	
	4 mm 0.5 Nm max.	3 mm 0.4 Nm max.

\* UL Tested

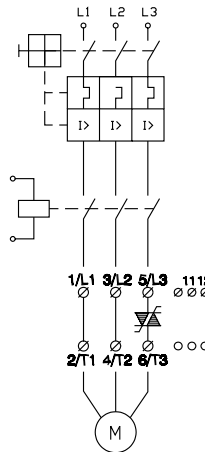
- **Vigtigt** (Overhold max skruedrejmomenter)

- **Important:** (Observe the maximum screw torque limits)

- **Wichtig:** (Max. Drehmoment beachten)

Do not connect power factor correction capacitors to the output.

### CTC3 .... (3 Phases)



Use UL Listed  
Magnetic Circuit Breaker or  
UL Listed back-up fuse  
type K5 or H Class

11&12 for UP 62 (termisk beskyttelse) eller  
andre tilslutninger. Ingen forbindelse til det  
ovrigt kredsløb.

11&12 for UP 62 (thermal overload) or other  
wiring purposes. Have no internal connection.

11&12 für UP 62 (Thermischer Schutz) oder  
andere Anschluss Möglichkeiten.  
Keine interne Verbindung.

DK: Hvis beskyttet med sikringer, se specifikationer i datablad  
EN: If protection with fuses, see recommendation in data-sheet  
DE: Falls Sicherungen verwendet werden, Empfehlungen im Datenblatt beachten

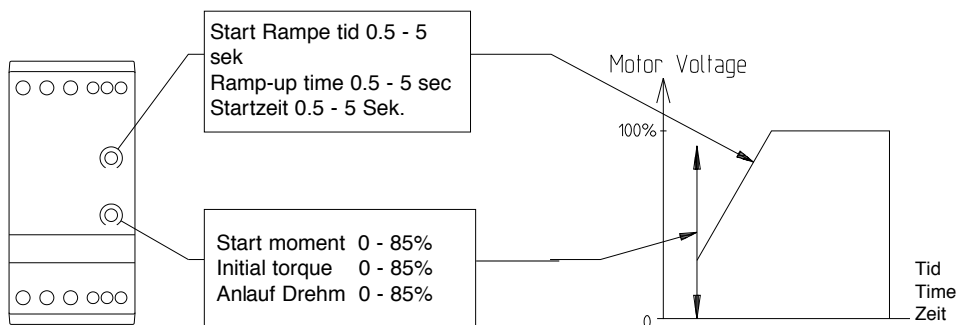
This product has been designed for class A equipment. Use of the product in domestic environments may cause radio interference, in which case the user may may be required to employ additional mitigation methods.

Use thermal overload protection as required by the National Electric Code.  
When protected by a non-time delay K5 or H Class fuse, rated 266 % of motor FLA, this device is rated for use on a circuit capable of delivering not more than 5,000 rms. symmetrical amperes, 600 V maximum.  
Maximum surrounding temperature 40°C.

DK: Se specifikationer i datablad

EN: See recommendation in datasheet

DE: Empfehlungen im Datenblatt beachten

**Indstilling - Settings - Einstellungen**

**Bemærkninger - Remarks - Bemerkungen**

<b>NB</b>	<b>DK</b> - Anvend 2 mm x 0.5 mm skruetrækker - Gentagne start forsøg kan resultere i at motor overbelastnings relæet aktiveres	<b>EN</b> - Use 2 mm x 0.5 mm screwdriver - Repeated starts may trip the motor protection relay	<b>DE</b> -Schraubenzieher 2 mm x 0.5 mm verwenden - Mehrfach Starts kann Motorschutzrelais auslösen
-----------	---	---	--

**Start moment indstilling - Initial torque setting - Einstellung der Startleistung**

	<b>DK</b> 1) Indstil Ramp-up til max. 2) Indstil Initial Torque til min. 3) Påtryk spændingen i et par sekunder, hvis ikke motor akslen roterer øjeblikke lig efter start, juster Initial Torque en deling op. Gentag indtil motor akslen roterer øjeblikkelig efter start.	<b>EN</b> 1) Set Ramp-up switch to maximum 2) Set Initial Torque to minimum 3) Apply voltage for a few seconds. If the load does not rotate immediately increase the Initial Torque one step and try again.Repeat until the load starts to rotate immediately on start up.	<b>DE</b> 1) Ramp-up Schalter auf max. stellen 2) Initial Torque Schalter auf min. stellen 3) Spannung einige Sekunden betätigen. Falls Motor nicht sofort anläuft, Initial Torque schrittweise erhöhen, bis Motor anläuft

**Start rampe indstilling - Ramp-up settings - Einstellung der Startanstiegszeit**

	<b>DK</b> 1) Indstil Ramp-up til max og motoren starter. 2) Gradvis nedsæt Ramp-up tiden indtil motoren starter som ønsket	<b>EN</b> 1) Set Ramp-up switch to maximum and the motor starts 2) Decrease the Ramp-up time until desired start is achieved	<b>DE</b> 1) Ramp-up Schalter auf max. stellen 2) Ramp-up Zeit solange verkürzen, bis der Motor wis gewünscht anläuft
--	--	--	---

04/19