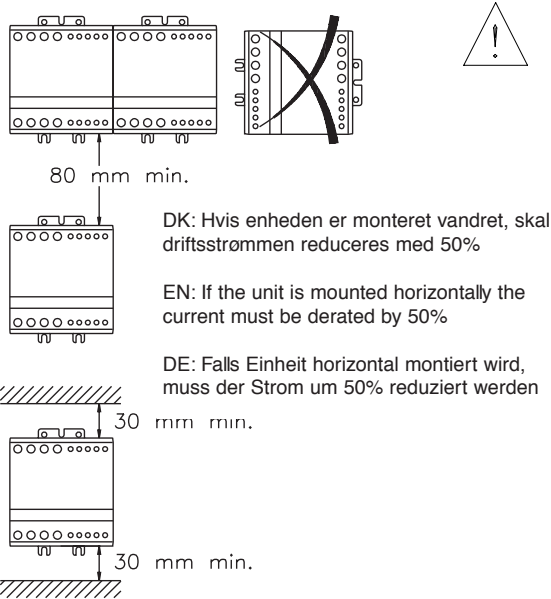
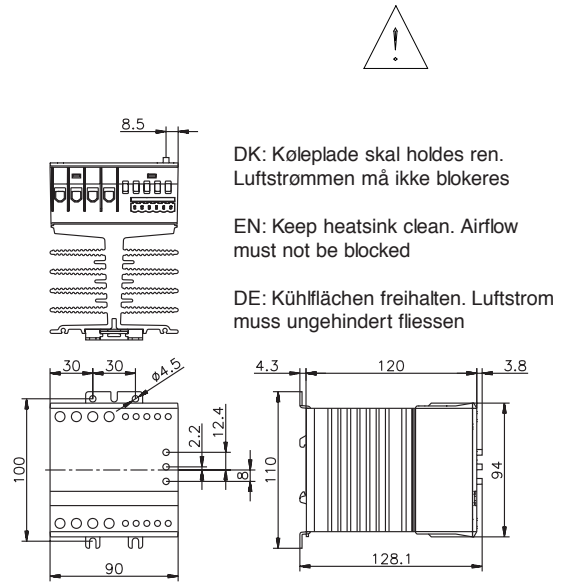


Montering - Mounting - Montage

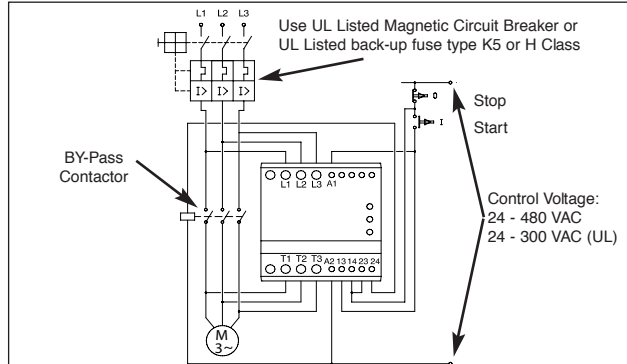
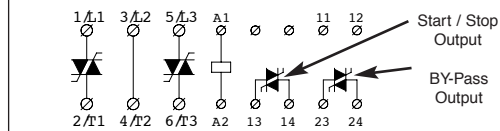


Dimensioner - Dimensions - Dimensionen



Forbindelse - Wiring - Verdrahtung

75°C Wire / Kabel	mm <sup>2</sup>	mm <sup>2</sup>
*	1 x 1.5 - 6	1 x 0.5 - 1.5
	2 x 1.5 - 6	2 x 0.5 - 0.75
*	1 x 1.5 - 6	1 x 0.5 - 1.5
	2 x 1.5 - 6	2 x 0.5 - 1.5
*	1 x 1 - 10	1 x 0.5 - 1.5
	2 x 1 - 6	2 x 0.5 - 1.5
	Pozidrive 2 1.2 Nm max.	
	6 mm 1.2 Nm max.	3 mm 0.4 Nm max.



DK: Hvis beskyttet med sikringer, se specifikationer i datablad  
 EN: If protection with fuses, see recommendation in data-sheet  
 DE: Falls Sicherungen verwendet werden, Empfehlungen im Datenblatt beachten

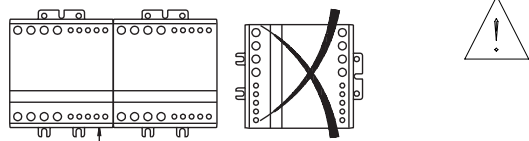
This product has been designed for class A equipment. Use of the product in domestic environments may cause radio interference, in which case the user may be required to employ additional mitigation methods.

\* UL Tested  
 - Vigtigt (Overhold max skruedrejningsmomenter)  
 - Important: (Observe the maximum screw torque limits)  
 - Wichtig: (Max. Drehmoment beachten)  
 Do not connect power factor correction capacitors to the output.

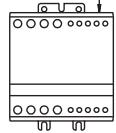
Use thermal overload protection as required by the National Electric Code.  
 CCM XX US. When protected by a non-time delay K5 or H Class fuse, rated 266 % of motor FLA, this device is rated for use on a circuit capable of delivering not more than 5,000 rms. symmetrical amperes, 600 V maximum.  
 Maximum surrounding temperature 40°C.

DK: Se specifikationer i datablad EN: See recommendation in datasheet DE: Empfehlungen im Datenblatt beachten

Montering - Mounting - Montage



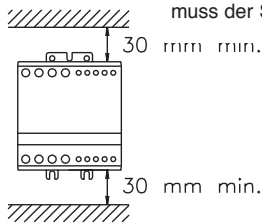
80 mm min.



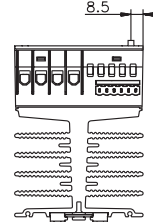
DK: Hvis enheden er monteret vandret, skal driftsstrømmen reduceres med 50%

EN: If the unit is mounted horizontally the current must be derated by 50%

DE: Falls Einheit horizontal montiert wird, muss der Strom um 50% reduziert werden



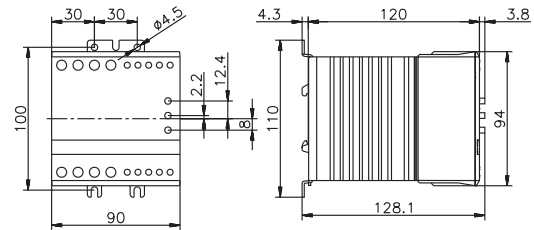
Dimensioner - Dimensions - Dimensionen



DK: Køleplade skal holdes ren. Luftstrømmen må ikke blokeres

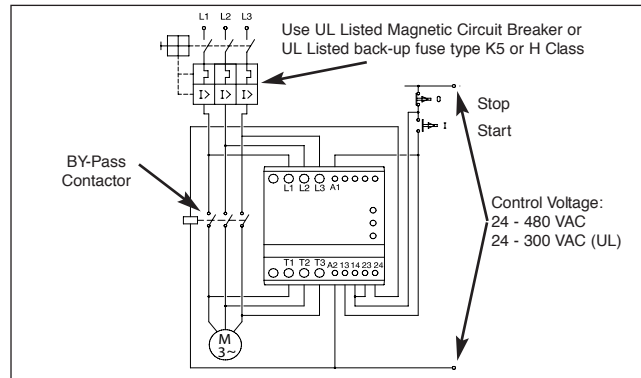
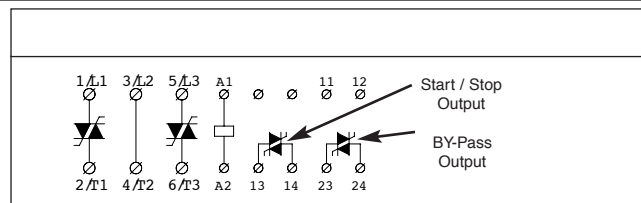
EN: Keep heatsink clean. Airflow must not be blocked

DE: Kühlflächen freihalten. Luftstrom muss ungehindert fließen



Forbindelse - Wiring - Verdrahtung

75°C Wire / Kabel	mm <sup>2</sup>	mm <sup>2</sup>
*	1 x 1.5 - 6	1 x 0.5 - 1.5
	2 x 1.5 - 6	2 x 0.5 - 0.75
*	1 x 1.5 - 6	1 x 0.5 - 1.5
	2 x 1.5 - 6	2 x 0.5 - 1.5
*	1 x 1 - 10	1 x 0.5 - 1.5
	2 x 1 - 6	2 x 0.5 - 1.5
	Pozidrive 2 1.2 Nm max.	
	6 mm 1.2 Nm max.	3 mm 0.4 Nm max.



\* UL Tested  
 - Vigtigt (Overhold max skruedrejningsmomenter)  
 - Important: (Observe the maximum screw torque limits)  
 - Wichtig: (Max. Drehmoment beachten)  
 Do not connect power factor correction capacitors to the output.

DK: Hvis beskyttet med sikringer, se specifikationer i datablad  
 EN: If protection with fuses, see recommendation in data-sheet  
 DE: Falls Sicherungen verwendet werden, Empfehlungen im Datenblatt beachten

This product has been designed for class A equipment. Use of the product in domestic environments may cause radio interference, in which case the user may be required to employ additional mitigation methods.

Use thermal overload protection as required by the National Electric Code. CCM XX US. When protected by a non-time delay K5 or H Class fuse, rated 266 % of motor FLA, this device is rated for use on a circuit capable of delivering not more than 5,000 rms. symmetrical amperes, 600 V maximum. Maximum surrounding temperature 40°C.

DK: Se specifikationer i datablad EN: See recommendation in datasheet DE: Empfehlungen im Datenblatt beachten

04/19