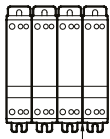


Montering - Mounting - Montage



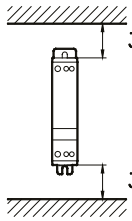
80 mm min.



DK: Hvis enheden er monteret vandret, skal driftsstrømmen reduceres med 50%

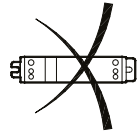
EN: If the unit is mounted horizontally the current must be derated by 50%

DE: Falls Einheit horizontal montiert wird, muss der Strom um 50% reduziert werden

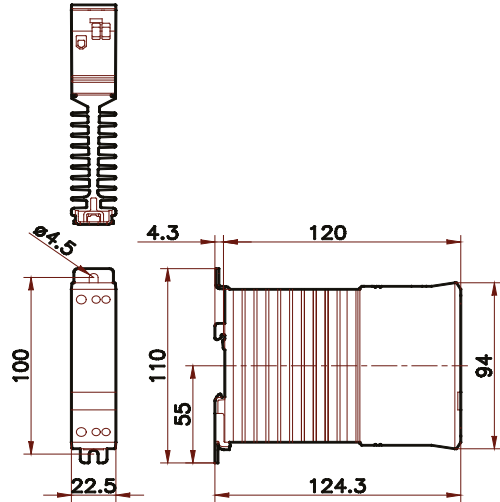


30 mm min.

30 mm min.



Dimensioner - Dimensions - Dimensionen



DK: Køleplade skal holdes ren. Luftstrømmen må ikke blokeres

UK: Keep heatsink clean. Airflow must not be blocked

DE: Kühlflächen freihalten. Luftstrom muss ungehindert fließen



Forbindelse - Wiring - Verdrahtung

75°C
Cu Wire/Kabel

mm²

mm²



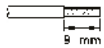
1 x 0.75 - 4

1 x 0.5 - 1.5



2 x 1.0

2 x 0.5 - 0.75



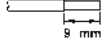
1 x 0.75 - 6

1 x 0.5 - 1.5



2 x 0.75 - 4.5

2 x 0.5 - 1.5



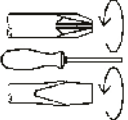
1 x 0.75 - 6

1 x 0.5 - 1.5



2 x 0.75 - 1.5

2 x 0.5 - 1.5

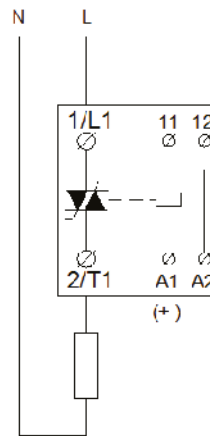


Pozidrive 1
0.5 Nm max.

4 mm
0.5 Nm max.

3 mm
0.4 Nm max.

CC1...



11&12 for UP 62 (termisk beskyttelse) eller andre tilslutninger. Ingen forbindelse til det øvrige kredsløb.

11&12 for UP 62 (thermal overload) or other wiring purposes. Have no internal connection.

11&12 für UP 62 (Thermischer Schutz) oder andere Anschluss Möglichkeiten. Keine interne Verbindung.

Control Voltage:
CC X DD = 5 - 24VDC

CC X DA = 24 - 230VAC/DC

- Vigtigt (Overhold max skruedrejningsmomenter)
 - Important: (Observe the maximum screw torque limits)
 - Wichtig: (Max. Drehmoment beachten)
- Do not connect power factor correction capacitors to the output.

Maximum surrounding temperature 40°C.
DK: Se specifikationer i datablad
EN: See recommendation in datasheet
DE: Empfehlungen im Datenblatt beachten