



Application report

## Diversity

## in the switch cabinet

---

**Partner** Bieri Elektrotechnik AG  
**Area** Industrial and process technology

# Industrial and process technology

Functional

Reliable

Individual

## Partner

Bieri Elektrotechnik AG was founded in 1989 as a sole proprietorship and has been led since 2010 by the second family generation, Christoph und Michael Bieri. With its 18-man team, the company operates in the fields of switchgear construction and project engineering and builds standard distributors, controllers for HVAC and I&C applications, switchgear assemblies for residential construction and type-tested systems up to 6300 A.

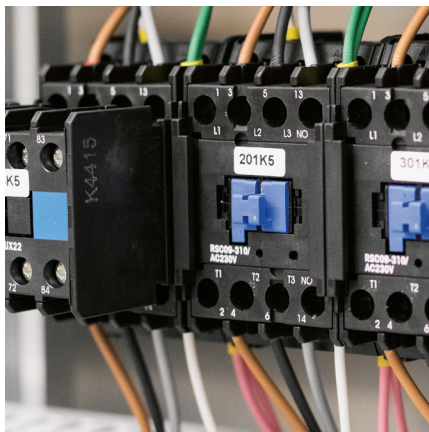
## ComatReleco Products in use

- SSU34 - Voltage monitoring
- C9-A41 - Industrial relays

**BIERI ELEKTROTECHNIK AG**

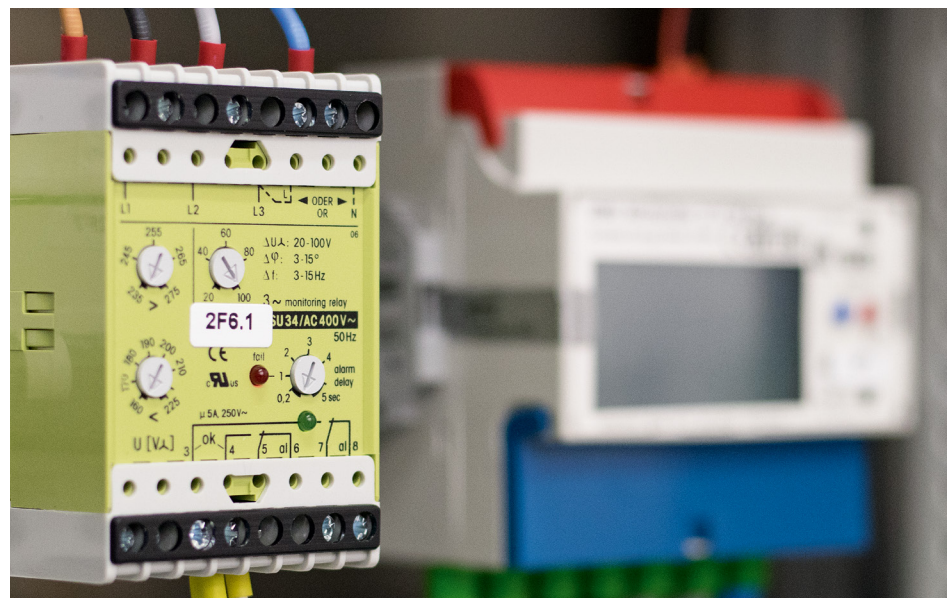
### The new industrial contactors from the RSC series

The contactors from the RSC series are used where switching devices are required with power contacts for the main load and signal contacts for feedback to the PLC. These include supply air and exhaust fans as well as air flaps in HVAC controllers. Thanks to the different contact variants, the contactors are suitable for the most diverse situations.



### Installation contactors from the RIC series

The multi-pole installation contactors from the RIC series are used in building automation for controlling high-power consumers such as washing machines or boilers. The different contact and voltage variants and the optionally available auxiliary contact modules make the RIC series ideal for a wide range of situations. The contactors are provided with lead-sealable terminal covers for blocking the access to power consumers from the ripple control signal onwards. Spacers prevent mutual heating if several contactors are installed in line in the distributor.



### SSU34: reliable monitoring

Over or undervoltage, grid asymmetry or an incorrect phase sequence can cause damage to control cabinet components and the infrastructure. The effects of such initially invisible events often appear gradually and are only noticed when considerable damage has already occurred. For this reason the SSU34/AC400V 50Hz monitors the grid directly at the input of the HVAC system and reports any deviations to the local PLC.

### Safe switching of signals: C9-A41

In HVAC systems the signals are often distributed across various plant areas. The reliable C9-A41 miniature industrial relays are used for this. Via the four changeover contacts, for example, warning lights can be controlled locally in the switchgear with the same relay from the PLC. At the same time, the error messages are forwarded potential-free to the higher-level system.

